

# Mobile Elevating Work Platforms (MEWPs)



## At a glance...

### Training (with Assessment) Competence with Modules

**Duration Notes:** The expected duration for the course is three days, however please note this may vary according to factors such as level of experience, modules or attachments selected, or the ratio of Instructors to Learners.

**Delivery Method:** Classroom and practical demonstration and assessment

## Introduction

Becoming proficient in operating this machinery is an essential and valued operator's skill for any contract, large or small.

## Overview in brief

This course will equip you with the knowledge and confidence to operate the machine safely, protecting both you and those around you.

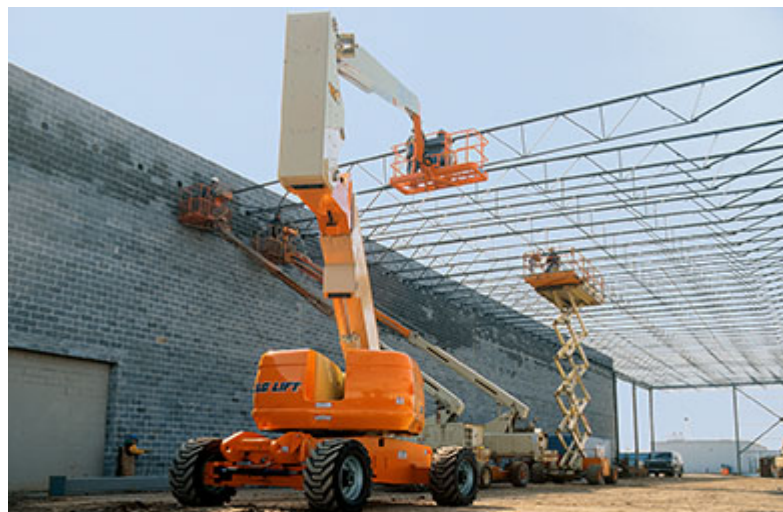
This course offers a range of certificate options depending on your needs:

- Static scissor lift
- Static hydraulic/telescopic boom
- Mobile scissor lift
- Mobile hydraulic/telescopic boom
- Manual vertical lift.

## The finer details

This training course has been developed to help you understand how to operate a MEWP safely.

The amount of instruction you will require will depend largely upon your previous experience and sessions will be adapted to meet your needs. Course duration will



depend on experience and will be from one to four days.

The training course will consist of theory and practical sessions, followed by assessment. Course sessions include:



- Plant Safety and the Law
- Machine Knowledge and Preparation for Work
- Travelling and Manoeuvring the Machine
- Machine Operation
- Theory Assessment
- Practical Assessment.

If successful in meeting the required standards assessed, you will be awarded a certificate of competence and a Lantra skills ID card for your chosen certificate option.

### Who should attend?

This course is for you if you need to become proficient in safely operating a MEWP.

As you'll appreciate, this course contains some practical activity that will require a minimum level of fitness. If you have any concerns, please speak to the Provider.

### What will be covered?

At the end of this course, you will be able to:

- Describe the key requirements of health, safety and environmental legislation
- Interpret and comply with drawings, specifications, schedules, risk assessments and manufacturer's operator's manual (MOM) related to the plant or machinery operations and the work to be carried out
- Identify the hazards associated with plant or machinery operations and put the appropriate control measures in place
- Identify and explain different types of MEWPs, their purpose, machine components and operator controls
- Conduct all operational and pre-start checks
- Prepare the MEWP for site and highway travel
- Drive, tow or push the MEWP safely over varying types of terrain
- Operate the MEWP safely in restricted spaces
- Prepare the MEWP for lifting procedures
- Complete a range of lifting operations
- Demonstrate how to operate MEWPs with safe working parameters
- Demonstrate how to safely carry out emergency lowering procedures
- Describe emergency procedures



- Explain how to prepare for using a MEWP including planning the lifting operation, key responsibilities and pre-use checks
- Identify the machine components and operator controls
- Operate controls from ground level and from within the working platform
- Travel the MEWP with the platform in a raised position (self-propelled only)
- Position the platform up to the maximum working height
- Shut down and secure plant or machinery
- Describe the procedures used for loading and unloading a MEWP on and off a transporter.

